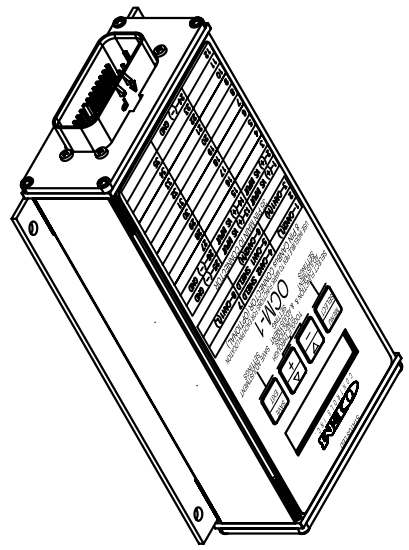


THIS DRAWING IS THE SOLE PROPERTY OF OEM CONTROLS INC., 10 CONTROLS DRIVE, SHELTON, CT 06484, USA. THIS DOCUMENT CONTAINS OEM PROPRIETARY INFORMATION. WRITTEN PERMISSION TO USE OR DISCLOSE ANY INFORMATION HEREIN MUST BE OBTAINED FROM OEM.

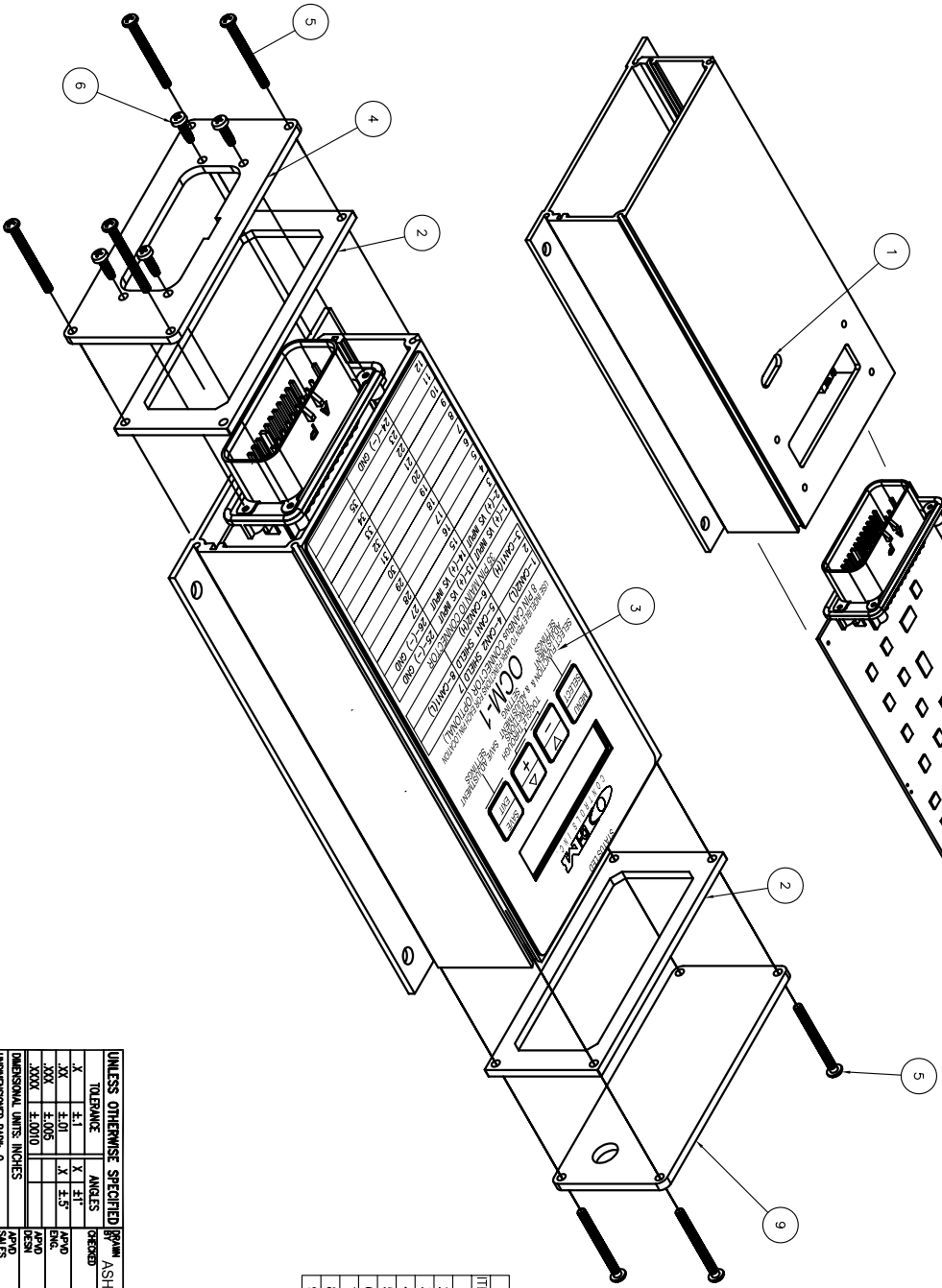
ZONE	REV	DESCRIPTION	DATE	APPROVED
-	A	ORIGINAL	MS 8/15/05	

PRC NO. C18001

REVISIONS



ITEM QTY	NAME	MATERIAL
1	SYS/2766	HOUSING
2	SYS/2769	GASKET
3	1 EPPC/464B	OCMI-2 PCB ASY
4	SYS/2713	END PLATE 35 PIN CONN
5	A/790	4-40 X 1-1/4" SCREWS
8	A/790	SCREW
4	EPSU/1174	TRANSFER TAPE
7	1 EPSU/1139	CAN MODULE OVERLAY
8	1 EPLB/1045	CAN MODULE OVERLAY
9	1 SYS/2768	BLANK END PLATE



4

3

2

1

A

B

C

D

A

B

C

D

UNLESS OTHERWISE SPECIFIED BY DATE 8/15/06

TOLERANCE ANGLES CHECKED BY DATE

XX ±.1 X ±.1

XXX ±.01 X ±.1

XXXX ±.005 X ±.1

UNLESS OTHERWISE SPECIFIED BY DATE 8/15/06

10 Controls Drive - Shelton, CT 06484  
 Controls Inc. Phone: (203) 928-9101 Fax: (203) 928-7565

SPARE PARTS ASSEMBLY  
 FOR OCMI-101 MODULE

PART NO. OCMI-101

PRC NO. C18001

DATE 8/15/05

APPROVED

REV. A

SIZE C

SHEET 1 of 1