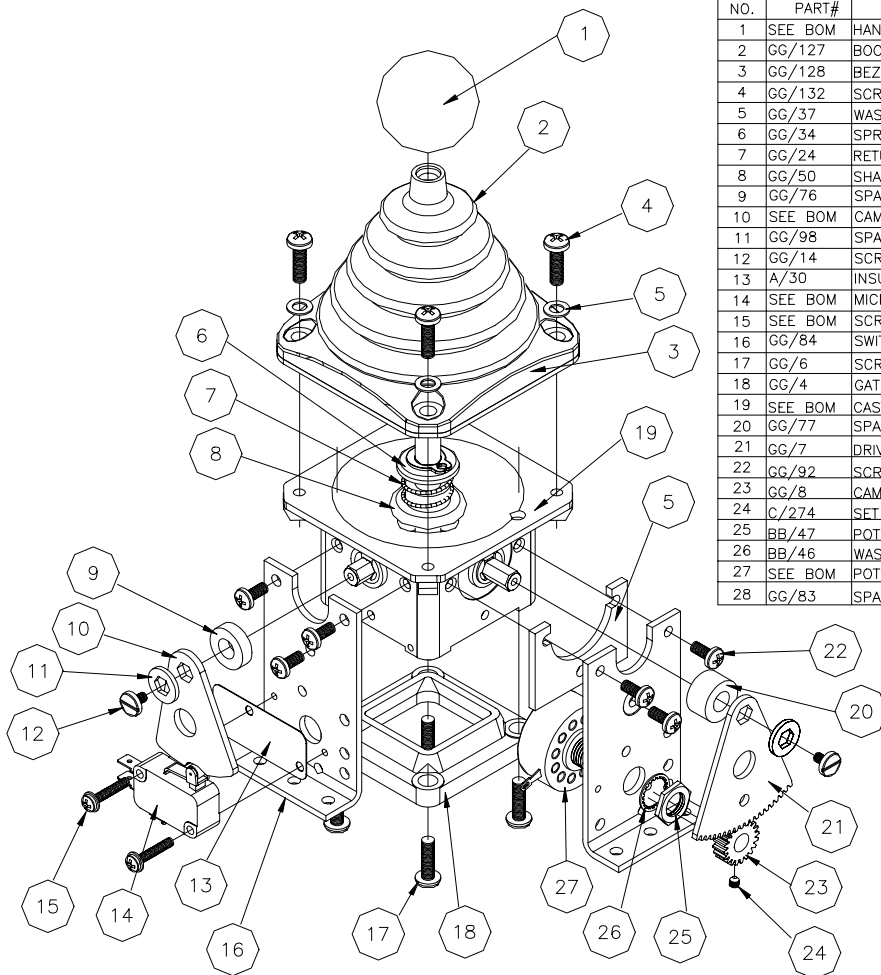


THIS DRAWING IS THE SOLE PROPERTY OF OEM CONTROLS INC.,
 10 CONTROLS DRIVE, SHELTON, CT 06484, USA. THIS
 DOCUMENT CONTAINS OEM PROPRIETARY INFORMATION. WRITTEN
 PERMISSION TO USE OR DISCLOSE ANY INFORMATION HEREIN
 MUST BE OBTAINED FROM OEM.

REVISIONS

REV	DESCRIPTION	DATE	APPROVED
A	ORIGINAL	AJS 5/30/00	

Parts list			
NO.	PART#	DESCRIPTION	QTY.
1	SEE BOM	HANDLE	1
2	GG/127	BOOT	1
3	GG/128	BEZEL	1
4	GG/132	SCREW	4
5	GG/37	WASHER	4
6	GG/34	SPRING RETAINER	1
7	GG/24	RETURN SPRING	1
8	GG/50	SHAFT NYLON BUSHING	1
9	GG/76	SPACER	2
10	SEE BOM	CAM	2
11	GG/98	SPACER	4
12	GG/14	SCREW	4
13	A/30	INSULATOR	2
14	SEE BOM	MICROSWITCH	2
15	SEE BOM	SCREW	4
16	GG/84	SWITCH PLATE	4
17	GG/6	SCREWS	4
18	GG/4	GATE	1
19	SEE BOM	CASTING	1
20	GG/77	SPACER	2
21	GG/7	DRIVE GEAR	2
22	GG/92	SCREW	12
23	GG/8	CAM GEAR	2
24	C/274	SET SCREW	2
25	BB/47	POT NUT	2
26	BB/46	WASHER	2
27	SEE BOM	POT	2
28	GG/83	SPACER PLATE	1



JS5

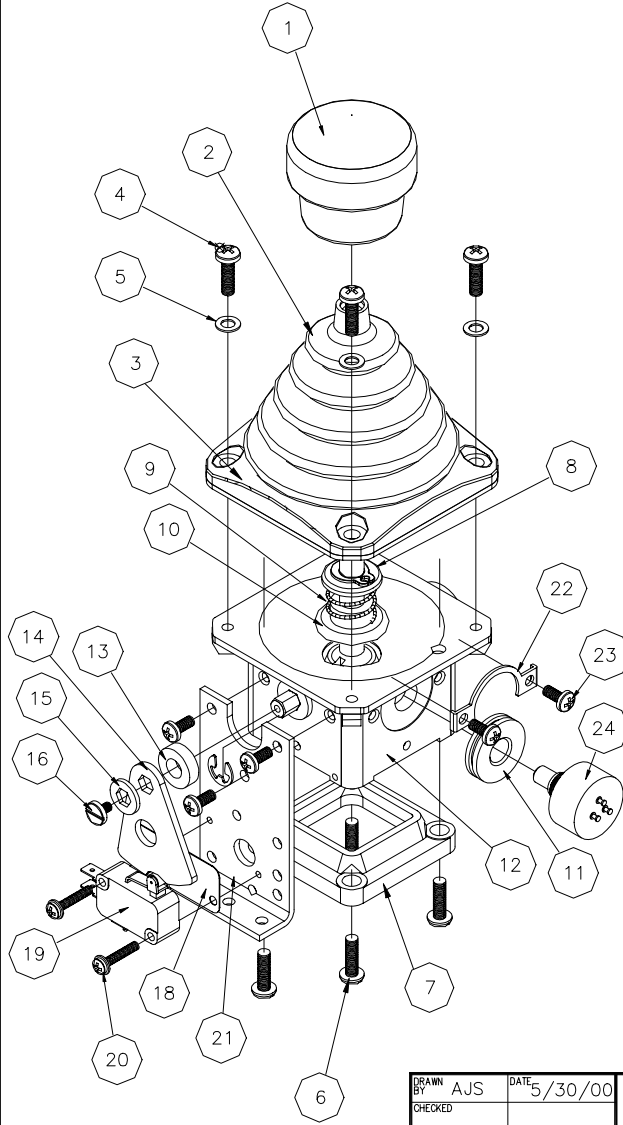
DRAWN BY	AJS	DATE	5/30/00
CHECKED			
APVD ENG.			
APVD DESN			
APVD SALES			
PROJECTION:		1	

		10 Controls Drive - Shelton, CT 06484 Phone: (203) 929-8431 Fax: (203) 929-7546
<h3>JS5 & JS5D ASSEMBLY & PARTS LIST</h3>		
PART NO.	DWG NO. A6537	REV. A
SCALE NTS	SHEET 2 OF 2	SIZE A

THIS DRAWING IS THE SOLE PROPERTY OF OEM CONTROLS INC., 10 CONTROLS DRIVE, SHELTON, CT 06484, USA. THIS DOCUMENT CONTAINS OEM PROPRIETARY INFORMATION. WRITTEN PERMISSION TO USE OR DISCLOSE ANY INFORMATION HEREIN MUST BE OBTAINED FROM OEM.

REVISIONS

REV	DESCRIPTION	DATE	APPROVED
A	ORIGINAL	AJS 5/30/00	



Parts list			
NO.	PART#	DESCRIPTION	QTY.
1	SEE BOM	HANDLE	1
2	GG/127	BOOT	1
3	GG/128	BEZEL	1
4	GG/132	SCREW	4
5	GG/37	WASHER	4
6	GG/6	SCREW	4
7	GG/4	GATE	1
8	GG/34	SPRING RETAINER	1
9	GG/24	RETURN SPRING	1
10	GG/50	SHAFT NYLON BUSHING	1
11	GG/91	POT ADAPTER	2
12	SEE BOM	CASTING	1
13	GG/76	SPACER	2
14	SEE BOM	CAM	2
15	GG/98	SPACER	2
16	GG/14	SCREW	2
17	A/204	"E" CLIP	2
18	A/30	INSULATOR	2
19	SEE BOM	MICROSWITCH	2
20	SEE BOM	SCREW	4
21	GG/84	SWITCH PLATE	2
22	GG/93	POT CLAMP	2
23	GG/92	SCREWS	10
24	SEE BOM	BI POT	2

JS5D

DRAWN BY	AJS	DATE	5/30/00
CHECKED			
APVD ENG.			
APVD DESN			
APVD SALES			
PROJECTION:			

		10 Controls Drive - Shelton, CT 06484	
		Phone: (203) 929-8431 Fax: (203) 929-7546	
JS5 & JS5D ASSEMBLY & PARTS LIST			
PART NO.	DWG NO. A6537	REV. A	
SCALE NTS	SHEET 1 OF 2	SIZE A	