

Single-Axis Controllers—Types MS2 / MS5



The MS2/MS5 single axis controllers combine modular design, compact size and electronics compatibility, making OEM Controls your choice for sure, dependable operation in applications such as electrohydraulic proportional valves or variable speed drives. These particular MS Series controllers are unique because of their rugged cast upper housing with an "O" ring seal on the operating shaft to maintain weather tightness, and seal out dust and dirt.

The MS5 mounting flange is narrower than that of the MS2, which allows it to fit into smaller control panels where space is at a premium. The reduction in flange width reduces the mounting hole dimensions, increasing the space available for options. Because of the larger mounting area, the number of options available on the MS2 is greater than the MS5.

Both controllers are available with a variety of microswitch configurations, potentiometer, and electronics to provide the precise, reliable control you demand on your equipment.

Options:

- **Spring Return or Friction Held Handle Operation**
- **Potentiometer Wired to Terminal Board**
- **Cap or Round Ball Handle**
- **V3 or SR1 Type Microswitches**
- **UFO Electronics**

Features:

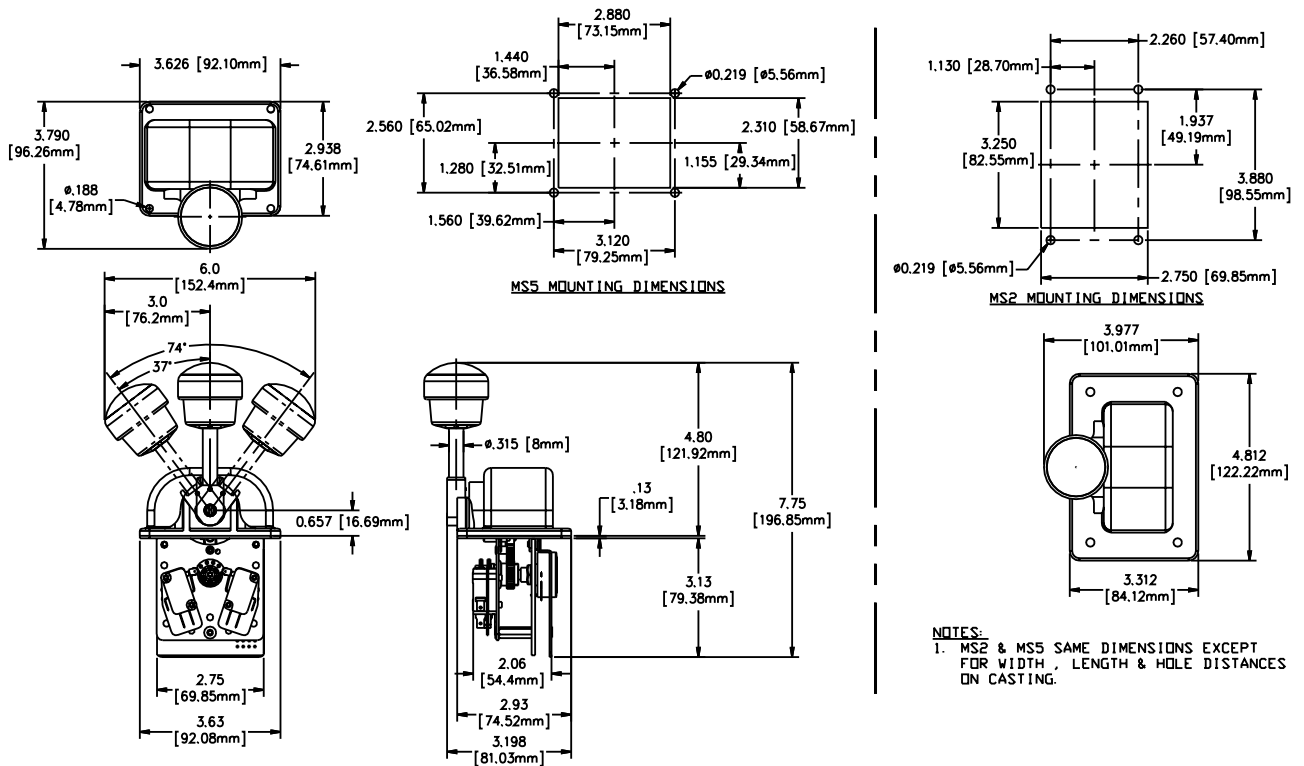
- **Microswitch cams can be fixed or field adjustable**
- **Field replaceable microswitches and electronic module**
- **Rugged drive gear mechanism**
- **Rugged Cast Zinc Housing**
- **Maximum number of mounted microswitches: without potentiometer— 6; with potentiometer or electronic module— 4**



Available with UFO electronic module for precise electrohydraulic valve control

Type MS2/5 with UFO

Approximate Overall Dimensions



Technical Data:

- **Mechanical Life:** > 1 million cycles
- **Operating Temperature:** -40° to +70°C
- **Handle Deflection:** 37° in each direction
- **Total potentiometer rotation:** 296°
- **MS2:** Total microswitches (SPDT): 4 max. with potentiometer; 6 max. without potentiometer
- **MS5:** Total microswitches (SPDT) with potentiometer: 2 max. / 4 without pot
- **Contact Rating:** Type V3 SPDT 10amp @ 24VDC or 125 VAC

Type SR1 contact 16 amp @ 24VDC – arc suppression

- **Degree of Protection:** IP65 above panel

WARNING: It is the purchaser's responsibility to determine the suitability of any OEM Controls product for an intended application, and to insure that it is installed and guarded in accordance with all federal, state, local and private safety and health regulations, codes and standards.

Due to the unlimited variety of machines, vehicles and equipment on which our controls are used, and the numerous standards which are frequently the subject of varying interpretation, it is impossible for OEM Controls personnel to provide expert advice regarding the suitability of a given controller for a specific application. The flexibility of our products allows us to offer thousands of custom configurations. We can advise you of the various features that are available and you can examine models to see what meets your needs. We believe our customers' engineering departments should be the qualified experts in their own product field. If the product will be used in a safety critical application, the customer must undertake appropriate testing and evaluation to prevent injury to the ultimate user.

Should you have any questions or if any of the above warning is unclear, please contact OEM Controls at 10 Controls Drive, Shelton, CT 06484, FAX: 203.929.3867, TEL: 203.929.8431.



10 Controls Drive • Shelton, CT 06484

Phone: 203.929.8431

Telefax: 203.929.3867

Internet: www.oemcontrols.com