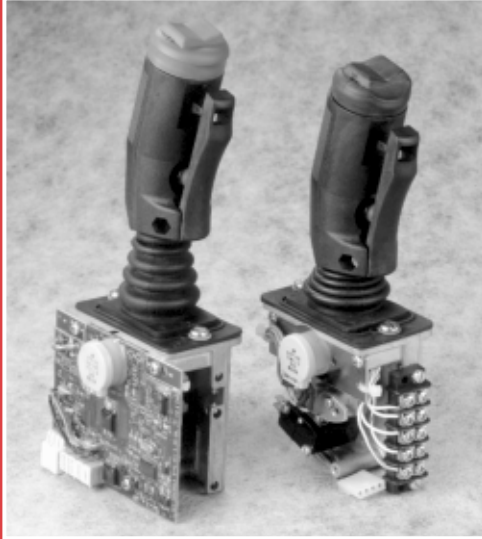


Single-Axis Controller– Type MS6



Designed for simplicity and cost-effectiveness, the MS6 is our most inexpensive controller. The MS6 has very few moving or mechanically linked parts– the potentiometer is direct-driven. No other couplings, cams or hardware is needed. The MS6 is available with the RG5E/RG4E Rocker Grip Enable handles, UFO electronics, and up to 4 stacked microswitches.

Features:

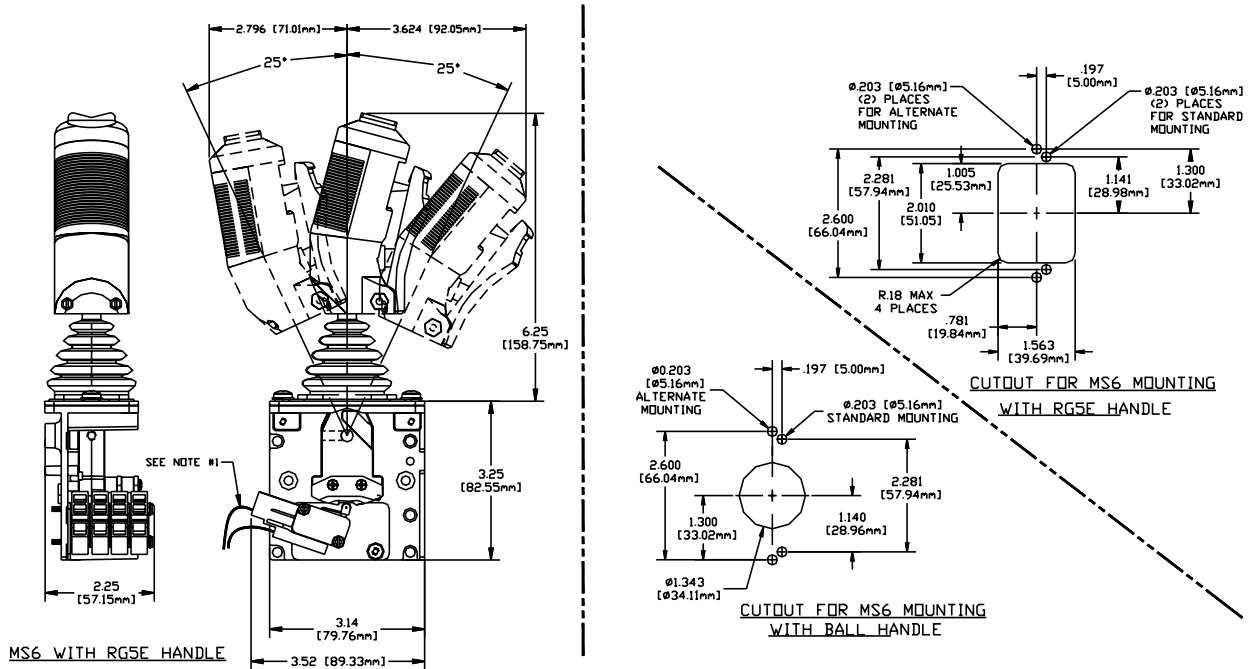
- **Compatible with All RG Handle Types**
- **Compatible with UFO Electronics**
- **Up to 4 V3 Type Contacts**
- **Variety of Potentiometers Available**
- **Solid Zinc Housing / Body– Very few other parts for assembly or replacement**
- **Direct Drive Potentiometer and Fixed Contact Cams**



Available with UFO electronic module for precise electrohydraulic valve control

Type MS6 with UFO

Approximate Overall Dimensions



NOTE:
1. ALLOW .50 [12.70mm] FOR WIRE HOOKUP

Technical Data:

- **Mechanical Life:** > 1 million cycles
- **Operating Temperature:** -40° to +70°C
- **Handle Deflection:** 50° (center to full: 25°)
- **Total Potentiometer Rotation:** 50°
- **Contacts:** 4 without UFO board; 3 with UFO board
- **Contact Rating:** Type V3 SPDT 10 amp @ 24VDC or 125VAC
- **Degree of Protection:** IP54 above panel

WARNING: It is the purchaser's responsibility to determine the suitability of any OEM Controls product for an intended application, and to insure that it is installed and guarded in accordance with all federal, state, local and private safety and health regulations, codes and standards.

Due to the unlimited variety of machines, vehicles and equipment on which our controls are used, and the numerous standards which are frequently the subject of varying interpretation, it is impossible for OEM Controls personnel to provide expert advice regarding the suitability of a given controller for a specific application. The flexibility of our products allows us to offer thousands of custom configurations. We can advise you of the various features that are available and you can examine models to see what meets your needs. We believe our customers' engineering departments should be the qualified experts in their own product field. If the product will be used in a safety critical application, the customer must undertake appropriate testing and evaluation to prevent injury to the ultimate user.

Should you have any questions or if any of the above warning is unclear, please contact OEM Controls at 10 Controls Drive, Shelton, CT 06484, FAX: 203.929.3867, TEL: 203.929.8431.



10 Controls Drive • Shelton, CT 06484

Phone: 203.929.8431

Telefax: 203.929.3867

Internet: www.oemcontrols.com