

Single-Axis Controller– Type MS4



The rugged reliability of the MS4 type single axis controllers has been proven in applications ranging from the controlling of a blast hole drill in the hot, dusty environment of an open pit mine in Arizona to the precise maneuvering of an aerial lift in the bitter cold winters of Canada. Its design flexibility allows us to tailor this controller to your specific requirements. You can select from a variety of configurations, potentiometers, and handle mechanisms. A sophisticated electronics package is available for the precise remote control of electrohydraulics to suit your particular application, and enhance the operation of your equipment. The many advantages offered by this controller make it ideal for reliable, long-life performance. Designers will particularly like its compact mounting design which takes up a minimum of panel space, simplifying layout and improving graphics.

Options:

Handle Operation

- **Friction hold**– maintains the handle position set by the operator, with field-adjustable settings
- **Dual Rate Spring Feel**– provides the operator with two different return spring pressures; a light pressure at the beginning of the handle travel and a heavier pressure as the handle moves through the detent stage of travel
- **Maintained Center Detent**– provides a positive location of the center of handle travel
- **Speed Detent**– provides a maximum of 5 positions in the A direction, a center position, and a maximum of 5 positions in the B direction
- **Standard Spring Return to Center**
- **Heavy-Duty Spring Return to Center**

Auxillary Switch (SPDT)

- **Push-button in knob**
- **2 Piece Cap Handle**– raise lower cap
- **2 Piece Cap Handle**– push down cap
- **Rocker Grip**– see RG Handle section

Potentiometer

- **A wide range of standard and custom pots are available.**



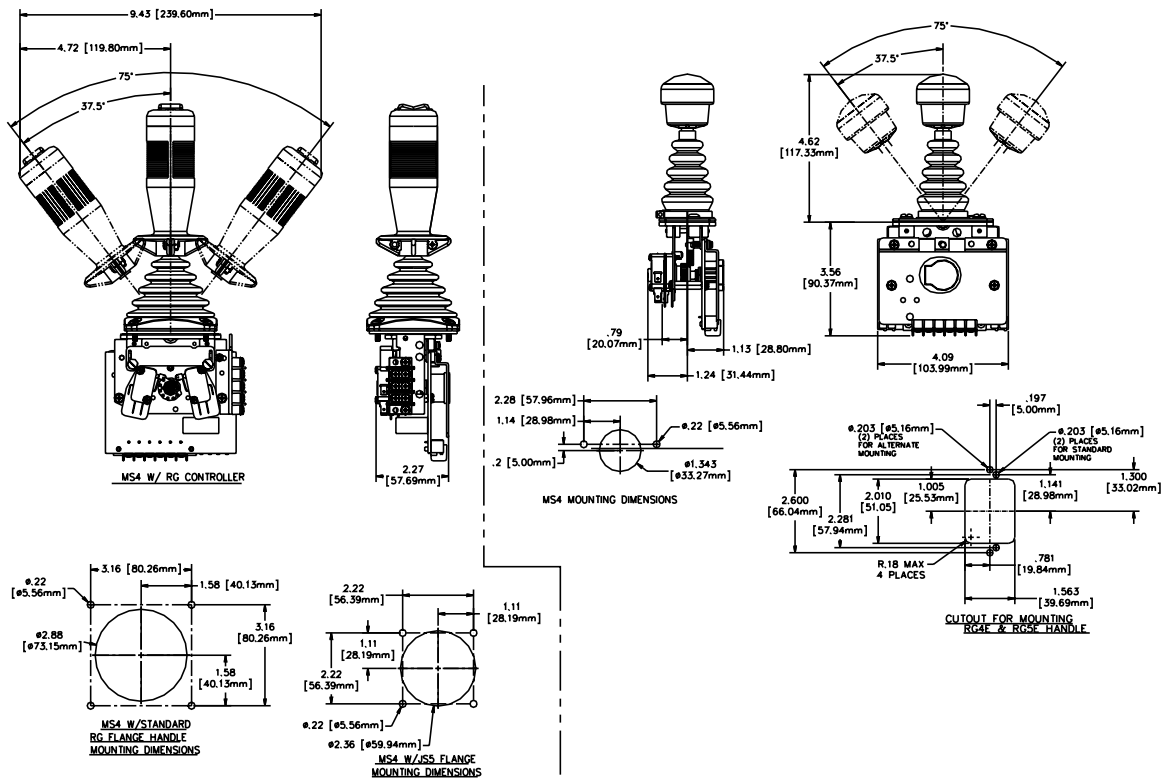
Available with UFO electronic module for precise electrohydraulic valve control

UFO Electronics

- **See UFO-9 section**
- **DigiSensor electronics for use with SuperFLEX product line**

Type MS4 with UFO

Approximate Overall Dimensions



Features:

- Microswitch cams can be fixed or field adjustable
- Field-replaceable microswitches and electronic module
- Rugged drive gear mechanism
- Proven neoprene boot design
- Maximum number of mounted microswitches: without potentiometer– 6; with potentiometer or electronic module– 4

Technical Data:

- Mechanical Life: > 1 million cycles
- Operating Temperature: -40° to +70°C
- Handle Deflection: 37.5° in each direction
- Total Pot Rotation: 300°
- Contact Rating: Type V3 SPDT 10 amp @24VDC or 125VAC
- Degree of Protection: IP54 above panel

WARNING: It is the purchaser's responsibility to determine the suitability of any OEM Controls product for an intended application, and to insure that it is installed and guarded in accordance with all federal, state, local and private safety and health regulations, codes and standards.

Due to the unlimited variety of machines, vehicles and equipment on which our controls are used, and the numerous standards which are frequently the subject of varying interpretation, it is impossible for OEM Controls personnel to provide expert advice regarding the suitability of a given controller for a specific application. The flexibility of our products allows us to offer thousands of custom configurations. We can advise you of the various features that are available and you can examine models to see what meets your needs. We believe our customers' engineering departments should be the qualified experts in their own product field. If the product will be used in a safety critical application, the customer must undertake appropriate testing and evaluation to prevent injury to the ultimate user.

Should you have any questions or if any of the above warning is unclear, please contact OEM Controls at 10 Controls Drive, Shelton, CT 06484, FAX: 203.929.3867, TEL: 203.929.8431.



10 Controls Drive • Shelton, CT 06484

Phone: 203.929.8431

Telefax: 203.929.3867

Internet: www.oemcontrols.com