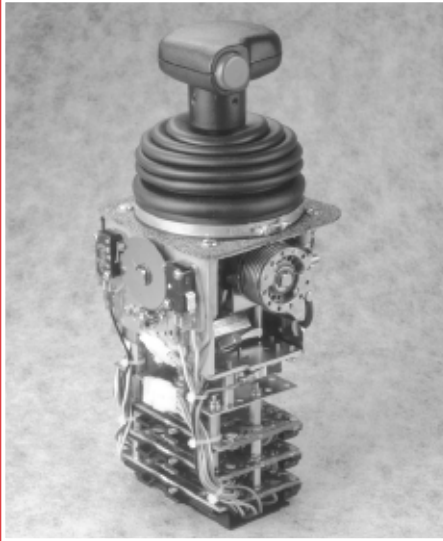


Multiple-Axis Controllers—Types JS2 / JS3



The rugged dependability of the JS2 & JS3 type controllers are our most versatile joystick designs. They are capable of single, dual or three-axis operation (JS3 only). Switches and potentiometers can be operated in each axis. The JS2 utilizes the heavy duty, double break N2 switches; up to 12 per axis. Of the two types, the JS3 is the recommended joystick for our electrohydraulic proportional valve controlling, multiplexed or fiber optic electronic boards. Versatility can be further enhanced through the addition of detented, friction held, or spring returned-to-center operating levers.

Options:

Auxiliary Switch

- **Pushbutton Knob**
- **Two-Piece Cap Handle**
 - **Raise Lower Cap**
 - **Push Down Cap**

Electronics

- **UFO Electronics**— see UFO section
- **DigiSensor electronics for use with SuperFLEX product line**

Handles

- **Round Ball**
- **Cap**
- **Palm**
- **Rocker Grip**— see RG Handle section
- **Multi Grip**— see MG Handle section

Handle Operation

- **Spring Return**
- **Detent Mechanism**— gives operator an indication of predetermined handle position
- **Friction Hold**— maintains handle position

Standard and Custom Gates

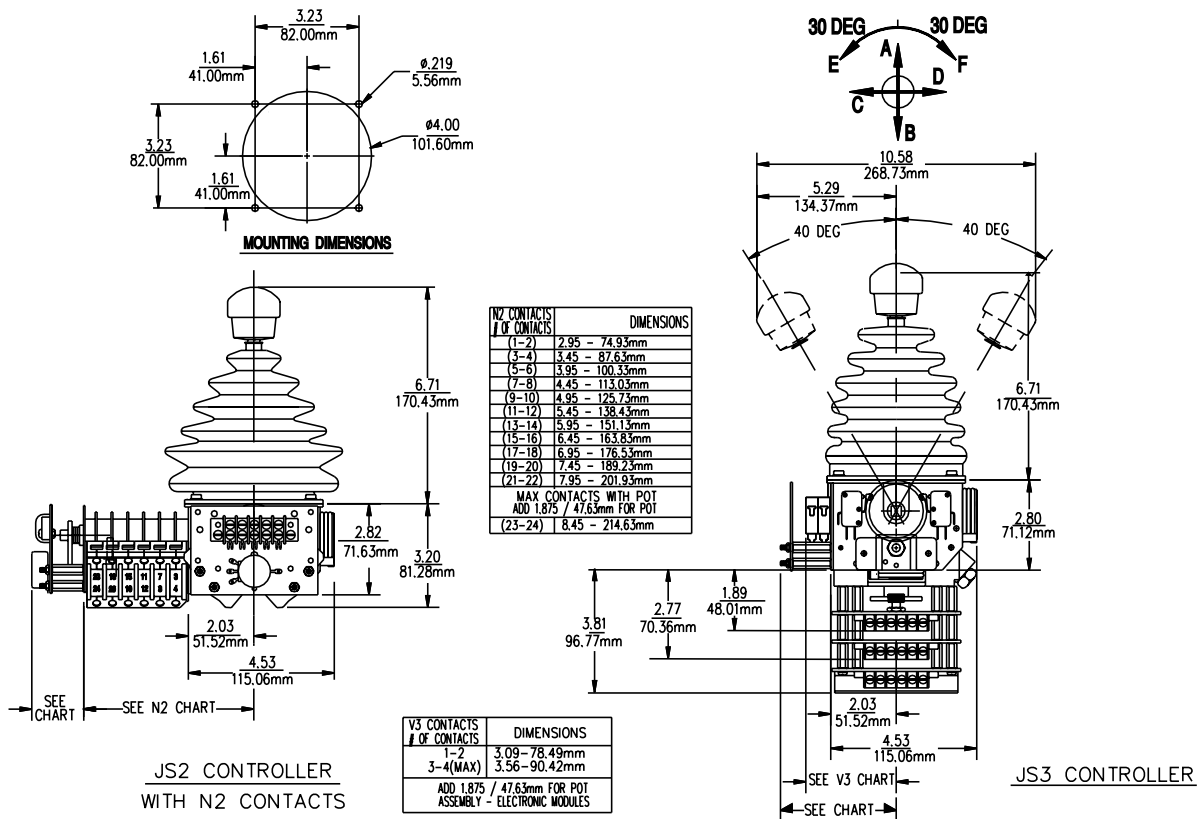
60° 3-Axis Controller Twist Handle (JS3 only)



Available with UFO electronic module for precise electrohydraulic valve control

Type JS2 / JS3 with UFO

Approximate Overall Dimensions



Technical Data:

- **Mechanical Life:** > 1 million cycles
- **Operating Temperature:** -40° to +70°C
- **Number of Detent Positions:** 1-5
- **Handle Deflection (JS2 and 2-axis JS3):** 80° (40° in each direction)
- **Twist Option (available on JS3 only):** 60° (30° in each direction)
- **Total Potentiometer Rotation:** 288°
- **Contact Rating:** Type V3 10amp @ 24VDC or 125VAC
Type N2 2amp @ 250VDC
- **Degree of Protection:** IP54 above panel

WARNING: It is the purchaser's responsibility to determine the suitability of any OEM Controls product for an intended application, and to insure that it is installed and guarded in accordance with all federal, state, local and private safety and health regulations, codes and standards.

Due to the unlimited variety of machines, vehicles and equipment on which our controls are used, and the numerous standards which are frequently the subject of varying interpretation, it is impossible for OEM Controls personnel to provide expert advice regarding the suitability of a given controller for a specific application. The flexibility of our products allows us to offer thousands of custom configurations. We can advise you of the various features that are available and you can examine models to see what meets your needs. We believe our customers' engineering departments should be the qualified experts in their own product field. If the product will be used in a safety critical application, the customer must undertake appropriate testing and evaluation to prevent injury to the ultimate user.

Should you have any questions or if any of the above warning is unclear, please contact OEM Controls at 10 Controls Drive, Shelton, CT 06484, FAX: 203.929.3867, TEL: 203.929.8431.



10 Controls Drive • Shelton, CT 06484

Phone: 203.929.8431

Telefax: 203.929.3867

Internet: www.oemcontrols.com