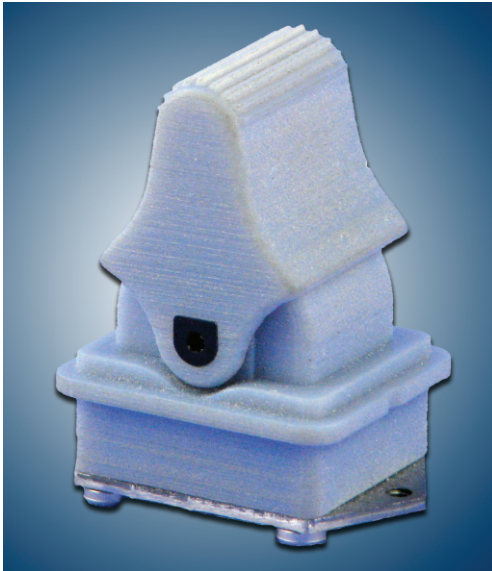


**Hall Effect Micro-Controllers:
 MS-10 and JS-20**

**MS-10
 Single Axis Micro-Controller**



3 Available Knob Styles:
 Paddle (Toggle), Wheel
 or Rocker

Mechanical Life:
 5 Million Cycles

Travel Angle:
 25° Each Direction

Operating Force:
 Up to 3.5N (0.79 lb)

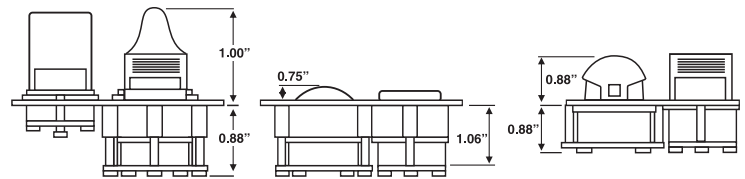
Operating Temperature:
 -40°C to +85°C

Protection: Ip67

Supply Voltage: 5Vdc

Output Voltage: 0.5 - 4.5Vdc

**Four Mounting Configurations:
 In Handle, On Panel Radio Chest Pack, etc.**



**JS-20
 Dual Axis Micro-Controller**



Mechanical Life:
 5 Million Cycles

Travel Angle:
 25° Each Direction

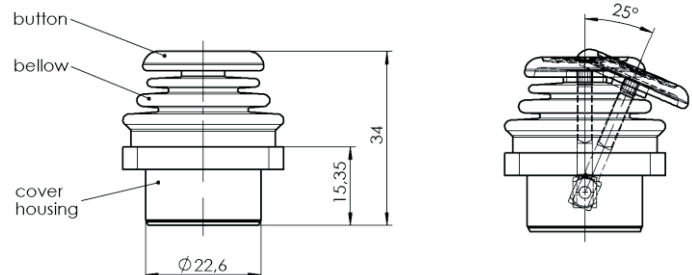
Operating Force:
 Up to 3.5N (0.79 lb)

Operating Temperature:
 -40°C to +85°C

Protection: Ip67

Supply Voltage: 5Vdc

Output Voltage: 0.5 - 4.5Vdc



⚠ WARNING: It is the purchaser's responsibility to determine the suitability of any OEM Controls product for an intended application, and to insure that it is installed and guarded in accordance with all federal, state, local and private safety and health regulations, codes and standards.

Due to the unlimited variety of machines, vehicles and equipment on which our controls are used, and the numerous standards which are frequently the subject of varying interpretation, it is impossible for OEM Controls personnel to provide expert advice regarding the suitability of a given controller for a specific application. The flexibility of our products allows us to offer thousands of custom configurations. We can advise you of the various features that are available and you can examine models to see what meets your needs. We believe our customers' engineering departments should be the qualified experts in their own product field. If the product will be used in a safety critical application, the customer must undertake appropriate testing and evaluation to prevent injury to the ultimate user.

Should you have any questions or if any of the above warning is unclear, please contact OEM Controls at 10 Controls Drive, Shelton, CT 06484, FAX: 203.929.3867, TEL: 203.929.8431.