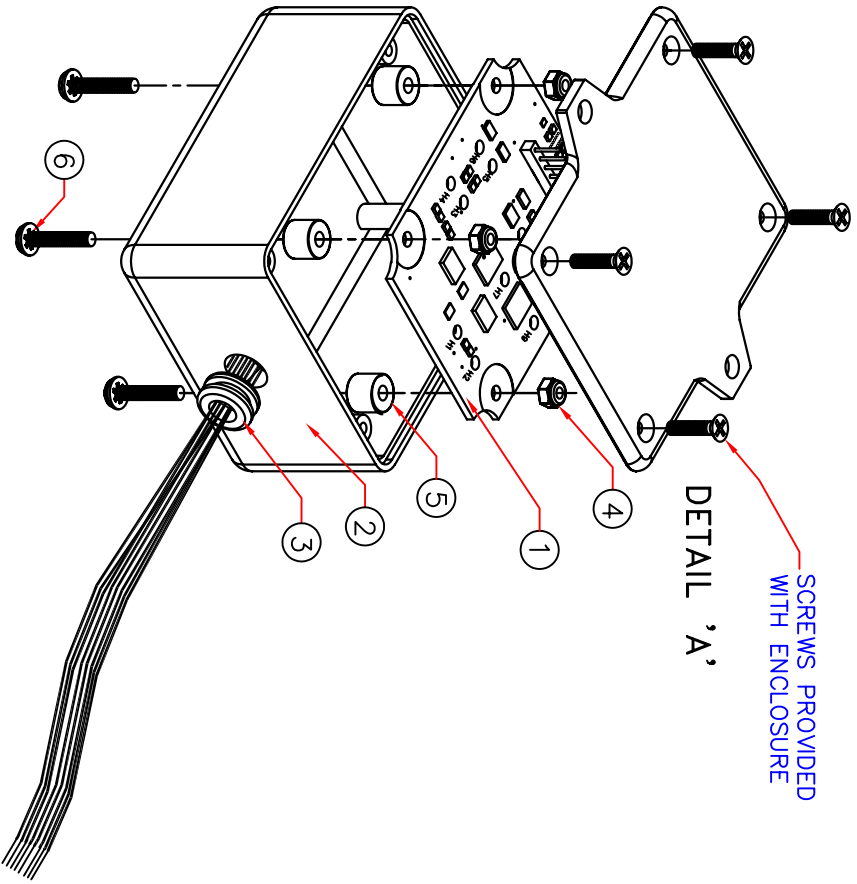


FINAL ASSEMBLY:

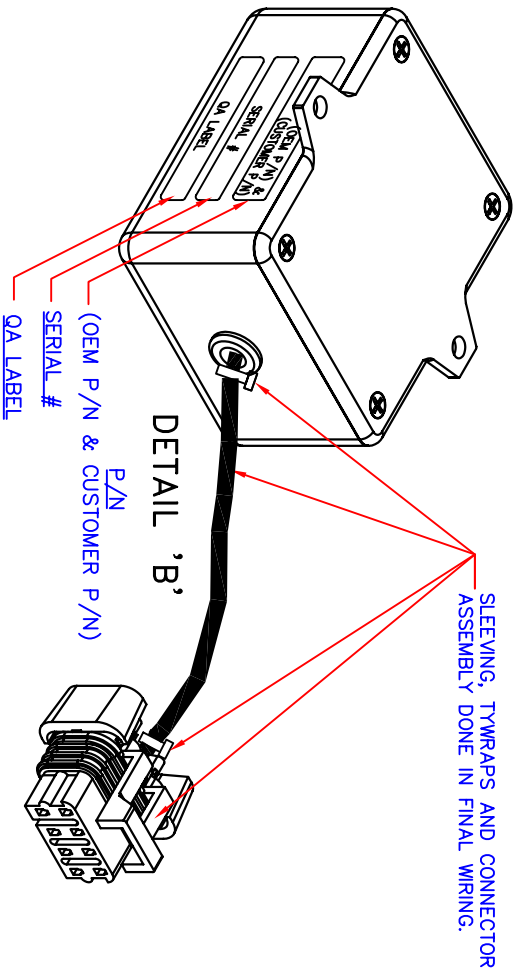
1. ROUTE WIRES THRU ENCLOSURE, IF NECESSARY USE SMALL AMOUNT OF WHITE GREASE (A/331) ON WIRES TO MAKE PULLING EASIER.
2. ASSEMBLE PCB IN ENCLOSURE AS SHOWN IN DETAIL 'A'.
3. ATTACH P/N AND SERIAL# LABELS PER DETAIL 'B'.
4. PLACE LABELS AS SHOWN SO QA CAN ADD QA LABEL.




Parts List			
ITEM	NAME	MATERIAL	QTY
1	DIR-PCB ASSY	PC BOARD	1
2	X/245	ENCLOSURE	1
3	AA/31	RUBBER GROMMET	1
4	SYS/93	LOOKNUT	4
5	A/556	SPACER	4
6	A/74	SCREW	4

THIS DRAWING IS THE SOLE PROPERTY OF OEM CONTROLS INC. 10 CONTROLS DRIVE, SHELTON, CT 06484. NO PART OF THIS DRAWING OR INFORMATION HEREIN MUST BE OBTAINED FROM OEM PERMISSION TO USE OR DISCLOSE ANY INFORMATION HEREIN MUST BE OBTAINED FROM OEM.

REVISIONS				
ZONE	REV	DESCRIPTION	DATE	APPROVED
-	A	ORIGINAL	AJS* 5/8/06	BGT* 5/17/06
-	B	UPDATED PER ECR#15466	MJD* 5/25/06	MP* 5/25/06



<p>  FINAL ASSEMBLY FOR SN1661 </p>	<p> 10 Controls Drive - Shelton, CT 06484 Phone: (203) 929-8431 Fax: (203) 929-7966 </p>
<p> DRAWN: ASHARF DATE: 5/8/06 CHECKED: MP 05/17/08 APVD: ENG. APVD: DSN APVD: SALES </p>	<p> PART NO. B17736-1 DWG NO. B17736 SCALE N/A SHEET 1 of 1 </p>